

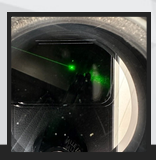


STATE COMPLIANCE



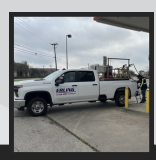
WHY CHOOSE US?

From TCEQ to TDLR, Erling provides the services necessary to keep sites in compliance with industry regulations. Our skilled technicians are experts in Dri-sump technology, calibrations, tank and line testing, and our team can perform repairs after testing is complete.



DRI-SUMP

Our technicians provide industry-leading Leighton O'Brien Dri-sump testing technology to our customers. This technology offers zero water waste, no downtime, and an accurate location of leaks. It serves as a zero-waste alternative to hydrostatic testing requirements.



CALIBRATIONS

Erling's policy is to calibrate every device to zero. By calibrating to zero, we provide 100% accuracy of gallons that are being sold. Our fleet of truck mounted calibration rigs have a minimal footprint to keep site impact to a minimum.



TESTING

Line and tank testing are important components of keeping a site in compliance. By using top technology from Leighton O'Brien, we can find and fix leaks quickly and accurately to prevent environmental damage and cleanup costs.

- METER CALIBRATION
- WATER REMOVAL
- LINE & TANK TESTING
- 30 DAY INSPECTIONS
- FILTER CHANGES
- SUMP CLEANING
- ATG REPORTS

WHO WE ARE

At Erling, we provide comprehensive solutions for retail and commercial gas stations and car washes. This includes equipment sales, new construction, maintenance, state regulatory and compliance, car wash, electrical and UST removals. With over 15 years experience, we take pride in serving Texas, Oklahoma, and Louisiana with offices located in Hutto, Bonham, Corpus Christi, DFW, Houston, Laredo, Mission, San Antonio, and Tyler. Our all-inclusive approach ensures that every aspect of your project is handled with expertise, including 24/7 365 emergency services.